

REAR SEAT PROTECTION 2 IN 1

Full protection – Pet's transport
Material's transport – Sport equipment's transport.



Robust
Waterproof
Non-slip

SPECIFICATIONS :

Dimensions : 137x147 cm

Weight : 1,5 kg



INSTALLATION :

1 - Two installation methods :

a - « Seat » method :

Place the straps on the rear head supports and fold the protection under the seat thanks to the zippers provided for this purpose. This will provide full seat protection.

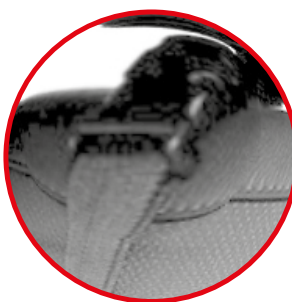


b - « Hammock » method :

Install the hammock on the rear seat by placing straps on the front and rear head supports and following the direction of the **FRONT** and **BACK** marker labels.



2 - Adjust straps to obtain the wished dimension



OPTIONS :

1 - Install sides protections thanks to the zippers provided for this purpose and the straps to be fixed on the holding handles.

2 - Take out the belt clip for passenger transport.

